

Environmental Stewardship: The Art of Land Acquisition, Restoration and Preservation



Carl Fisher,
Superintendent of
Parks

Jeffery Jones, CPRP
Assistant
Superintendent



Today's presentation:

- Overview/Introduction of Portage & Portage Parks
- Development of a Greenways/Blueways Plan
- Review of process used to acquire and develop 5 separate parks
- Preservation and Perpetuity
- Partnerships
 - Role of Park Foundations
 - Funding Sources
 - Educational Opportunities
- Questions

Portage, IN



Portage, IN

2000 Census: 33,496

2005 estimate: 35,485

2015 potential: 49,914

Portage Parks and Recreation

- **Established in 1966**
- **17 FTE's**
- **75 PTE's**
- **\$1.2 million operating budget**
- **\$400-\$500,000 in nonreverting funds**
- **Impact Fees and Bond Issues**

Portage Parks and Recreation

- Sports/Recreation/Special Events divisions
- Hall rental and banquet division
- Pre-school Program
- Historical Museum Complex
- Sports Complex: Softball & Soccer
- Top Rated BMX Track
- 10 miles of Mountain Biking Trails
- Skate Park
- 8 playgrounds and 14 picnic shelters

Portage Land Acquisition History

Park Department

12 properties/453 acres

2 trails: 11 miles/138 acres

Park Foundation

6 properties/193 acres

Total: 809 acres

4 proposed parks = 70 acres

Portage Grant History

Land Acquisition Grants

4 grants = \$530,000

Development Grants

Parks: 14 grants = \$1,056,380

Trails: 7 grants = \$3,313,000

Lakefront Park = \$6,823,000

Restoration Grants

8 grants = \$680,000

Total: 34 grants = \$12,402,380

Pending: 4 grants = \$1,300,000

Portage's Greenways/ Blueways Plan



Things to Remember!

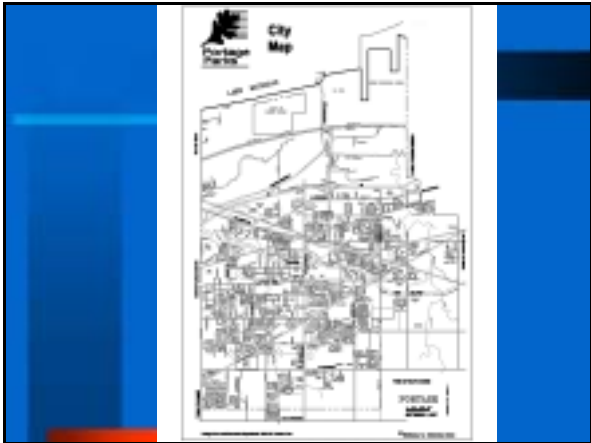
- Plan for the future
- Be part of City Comp Plan
- Be a part of any Regional or State Plans
- Document your vision for the future

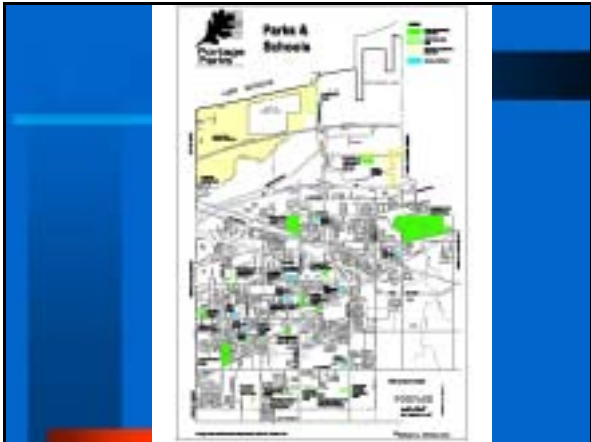
Plan for the Future

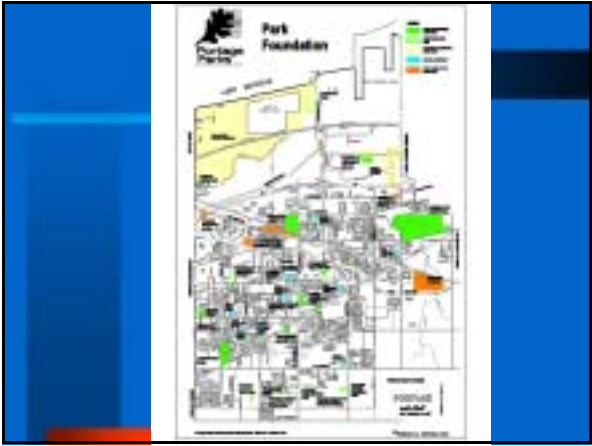


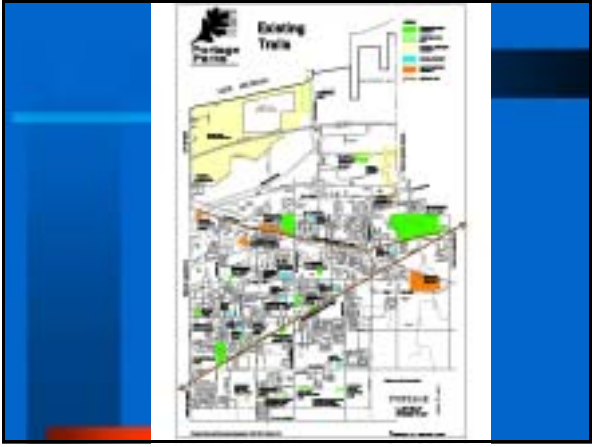
City of Portage Northside Plan







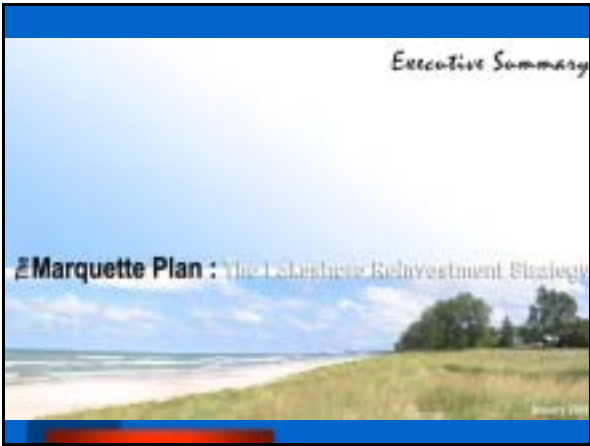




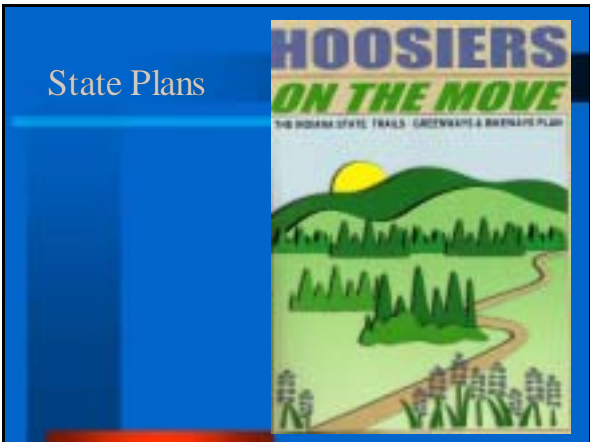
Regional Plans



Ped & Pedal
Northwestern Indiana Regional Planning Commission





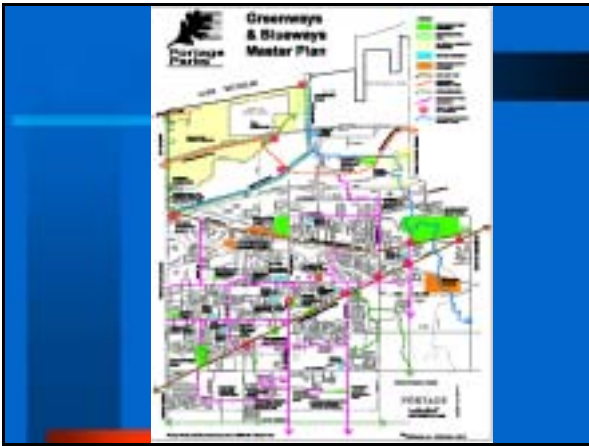


State Plans










Document!

Policy vs.
Ordinance?



- Founded in 1999
- Became a 501 (c) 3 organization in 2000 and a 509 (a) 3 organization
- Mission: To support the quality programs, facilities and services provided by the Portage Parks and Recreation Department by...



- ... funds and/or property through volunteer efforts and contributions, thereby enhancing the quality of life for the future generations of the Portage Community.

Foundation Activities:

- College Scholarships
- Special Grant Opportunities
- Land Acquisition

Land Acquisition History

| Year | Acres | Land Value |
|-------------|----------|---------------|
| 2000 | 22 | \$230,000 |
| 2004 | 5 | 76,600 |
| 2004 | 16 | 1,100,000 |
| 2004 | 12 | 88,800 |
| 2005 | 130 | 115,000 |
| <u>2006</u> | <u>8</u> | <u>83,520</u> |
| Total | 193 | \$1,693,920 |

Portage's Natural Resources

Site 1: Deer Trail Park

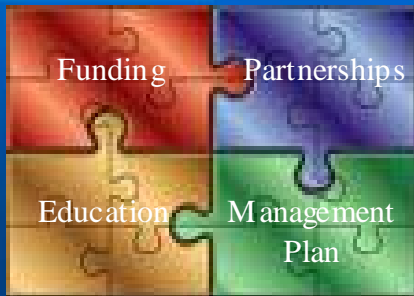
Site 2: Woodland Park – Oak Savanna

Site 3: Samuelson Fen

Site 4: Salt Creek Watershed

Site 5: Portage Lakefront Park

Today's presentation:





Ameriplex at the Port



Ameriplex



Little Calumet River Access and Restoration Project: Deer Trail Park



Deer Trail Park Partnerships



Deer Trail Park



Deer Trail Park



Deer Trail Park



Deer Trail Park



Deer Trail Park



Deer Trail Park



Deer Trail Park



Little Calumet Access and Restoration Project: Deer Trail Park



Deer Trail Park



Black Oak Savannah



Black Oak Savannah



Black Oak Savannah



Black Oak Savannah



Black Oak Savannah



Samuelson Fen



Samuelson Fen



Samuelson Fen



Samuelson Fen

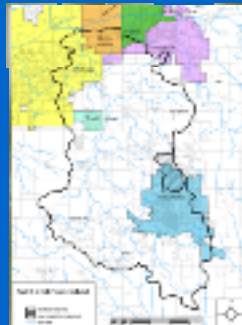


Samuelson Fen



Salt Creek Watershed

Save
the Dunes
Conservation Fund



Salt Creek Watershed Corridor



Salt Creek Habitat Restoration



Salt Creek Habitat Restoration



Salt Creek Habitat Restoration



Salt Creek Habitat Restoration



Salt Creek Habitat Restoration



Salt Creek Habitat Restoration



Salt Creek Habitat Restoration



Partnership Opportunities

Save
the Dunes
Conservation Fund









Portage Lakefront Park



Lakefront Park



Portage Lakefront Park



Portage Lakefront Park



Portage Lakefront Park



Portage Lakefront Park









Lakefront Park



Portage Lakefront Park



Portage Lakefront Park



Portage Lakefront Park



Portage Lakefront Park



Portage Lakefront Park



Portage Lakefront Park



Portage Lakefront Park



Portage Lakefront Park



Portage Lakefront Park



Portage Lakefront Park



Management Plan



Adopt-a-Park
Adopt-a-Trail
Adopt-a-Beach

The City Parks Foundation and the
New York City Dept of Parks and Recreation

Management Plan: Adopt-a-Park



Management Plan: Adopt-a-Park



Management Plan: Adopt-a-Park



Management Plan: Adopt-a-Park



Management Plan: Adopt-a-Trail



Adopt-a-Trail



Management Plan: Adopt-a-Beach



www.greatlakes.org

Land Acquisition: CELCP Grants

Coastal and Estuarine Land Conservation Program



2008 CELCP Grant



2008 CELCP Grant



Past CELCP Grant Project



Deer Island

Funding Sources: Federal



Funding Sources: Federal



<http://cfpub.epa.gov/fedfund/index.cfm>

Funding Sources: Federal

National Transportation Enhancement
Clearinghouse

www.enhancements.org

Funding Sources: Private



www.privatelandownernetwork.org

Funding Sources: Private



www.privatelandownernetwork.org

Funding Sources: Private



Toolbox for Great Outdoors

www.tools4outdoors.us



www.funoutdoors.com

Contact Information

- Carl Fisher, Superintendent
– portageparks@verizon.net
- Jeff Jones, Asst. Superintendent
– jjones.portageparks@verizon.net
- 219-762-1675

Questions?